

**THE E-BAY**



MADE IN THE U.S.A.

**IBT200 SERIES**

- High Bay Luminaire
- 4, 5, or 6 Lamps
- Specular Aluminum Reflectors (95%)
- High Reflectance White Aluminum Reflectors Optional
- Stem, Cable, and Chain Mountable
- .040 Aluminum Fixture Housing Available
- Quarter Turn Rotary Locking Sockets

**PHOTOMETRIC DATA**

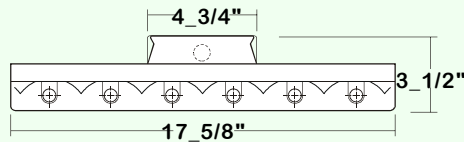
TEST ITEM=IBT200-6-4M-SR-E5H

TEST NO.=LA-T1514  
 LAMP TYPE=F54T5HO  
 NO. OF LAMP=6  
 LUMENS PER LAMPS=5000  
 WATTS PER LAMP=54  
 BALLAST FACTOR=1  
 PHOTOMETRY TYPE=C

SPACING CRITERION	
ALONG 1.33	ACROSS 1.08

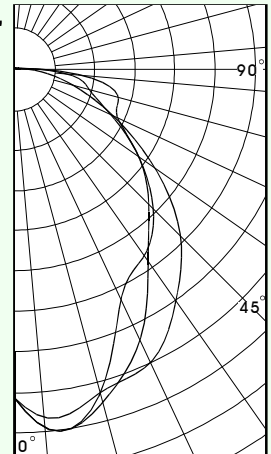
ZONAL LUMEN SUMMARY			
DEGREES	LUMENS	% LAMP	% FIXTURE
0-30	8012	26.7	28.2
0-40	12624	42.1	44.4
0-60	21540	71.8	75.7
0-90	28336	94.5	99.6
90-120	109	0.4	0.4
90-130	109	0.4	0.4
90-150	109	0.4	0.4
90-180	109	0.4	0.4
0-180	28446	94.8	100

CANDLEPOWER			
Angle	End	45	Cross
0	9933	9933	9933
5	10566	10888	10880
15	10091	10375	10062
25	9749	8977	7614
35	8490	7016	6848
45	7056	5715	5898
55	5109	4532	4529
65	3166	3128	3406
75	1696	2293	3219
85	546	1376	1787
90	49	242	367
95	1	52	118
105	0	0	5
115	0	0	0
125	0	0	0
135	0	0	0
145	0	0	0
155	0	0	0
165	0	0	0
175	0	0	0
180	0	0	0



Total Luminaire Optical Efficiency = 94.8%

COEFFICIENT OF UTILIZATION																						
pfc	20			70			50			30			10			0						
	80	70	30	70	50	30	50	30	50	30	50	30	50	30	50	30	50	30				
pw	70	50	30	70	50	30	50	30	50	30	50	30	50	30	50	30	50	30				
RCR	0	1	2	3	4	5	6	7	8	9	10	0	1	2	3	4	5	6	7	8	9	10
0	113	113	113	111	111	111	106	106	101	101	97	97	95	95	95	95	95	95	95	95	95	95
1	102	97	93	100	95	91	91	87	87	84	83	81	77	77	77	77	77	77	77	77	77	77
2	93	84	77	90	82	76	79	74	76	71	73	69	63	63	63	63	63	63	63	63	63	63
3	84	74	66	82	72	65	69	63	67	61	64	60	53	53	53	53	53	53	53	53	53	53
4	77	66	57	75	64	56	62	55	60	53	57	52	46	46	46	46	46	46	46	46	46	46
5	71	59	50	69	58	49	55	48	54	47	52	46	40	40	40	40	40	40	40	40	40	40
6	66	53	44	64	52	44	50	43	49	42	47	41	35	35	35	35	35	35	35	35	35	35
7	61	48	40	59	47	39	46	38	44	38	43	37	31	31	31	31	31	31	31	31	31	31
8	57	44	36	55	43	35	42	35	41	34	40	34	28	28	28	28	28	28	28	28	28	28
9	53	40	32	52	40	32	39	32	38	31	37	31	25	25	25	25	25	25	25	25	25	25
10	50	37	30	49	37	29	36	29	35	29	34	28	23	23	23	23	23	23	23	23	23	23



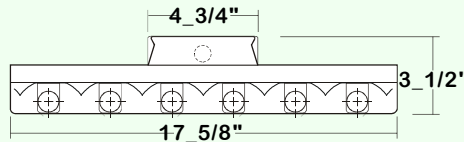
TEST ITEM=IBT200-6-4R-SR-E8

TEST NO.=LA-T1515  
 LAMP TYPE=FO32/31K  
 NO. OF LAMP=6  
 LUMENS PER LAMPS=2900  
 WATTS PER LAMP=32  
 BALLAST FACTOR=1  
 PHOTOMETRY TYPE=C

SPACING CRITERION	
ALONG 1.47	ACROSS 1.56

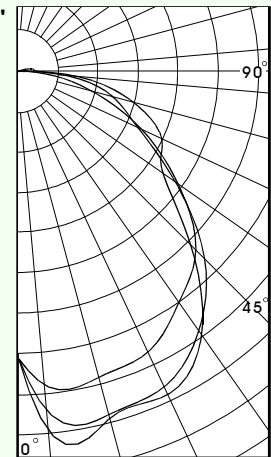
ZONAL LUMEN SUMMARY			
DEGREES	LUMENS	% LAMP	% FIXTURE
0-30	4062	23.3	25.2
0-40	6789	39.0	42.2
0-60	11943	68.6	74.2
0-90	15886	91.3	98.7
90-120	214	1.2	1.3
90-130	214	1.2	1.3
90-150	214	1.2	1.3
90-180	214	1.2	1.3
0-180	16100	92.5	100

CANDLEPOWER			
Angle	End	45	Cross
0	4066	4066	4066
5	4463	4840	5134
15	4464	5011	5057
25	4361	4904	5028
35	3960	4447	4508
45	3540	3705	3415
55	2734	2683	2479
65	1896	1846	2226
75	1056	1370	1667
85	356	664	812
90	46	193	289
95	8	115	214
105	0	50	125
115	0	7	38
125	0	0	1
135	0	0	0
145	0	0	0
155	0	0	0
165	0	0	0
175	0	0	0
180	0	0	0



Total Luminaire Optical Efficiency = 92.5%

COEFFICIENT OF UTILIZATION																						
pfc	20			70			50			30			10			0						
	80	70	30	70	50	30	50	30	50 <td>30</td> <td>50</td> <td>30</td> <td>50</td> <td>30</td> <td>50</td> <td>30</td> <td>50</td> <td>30</td>	30	50	30	50	30	50	30	50	30				
pw	70	50	30	70	50	30	50	30	50	30	50	30	50	30	50	30	50	30				
RCR	0	1	2	3	4	5	6	7	8	9	10	0	1	2	3	4	5	6	7	8	9	10
0	110	110	110	107	107	107	102	102	98	98	94	94	92	92	92	92	92	92	92	92	92	92
1	99	94	90	97	92	88	88	85	84	81	80	78	74	74	74	74	74	74	74	74	74	74
2	90	82	75	87	80	73	76	71	73	68	70	66	61	61	61	61	61	61	61	61	61	61
3	82	71	63	79	70	62	67	60	64	59	61	57	51	51	51	51	51	51	51	51	51	51
4	75	63	54	72	62	54	59	52	57	51	55	49	43	43	43	43	43	43	43	43	43	43
5	69	56	47	66	55	47	53	46	51	45	49	43	37	37	37	37	37	37	37	37	37	37
6	63	50	42	61	49	41	48	40	46	40	44	39	32	32	32	32	32	32	32	32	32	32
7	59	46	37	57	45	37	43	36	42	35	40	35	28	28	28	28	28	28	28	28	28	28
8	54	42	33	53	41	33	39	32	38	32	37	31	25	25	25	25	25	25	25	25	25	25
9	51	38	30	49	37	30	36	29	35	29	34	28	23	23	23	23	23	23	23	23	23	23
10	48	35	28	46	34	27	33	27	33	26	32	26	20	20	20	20	20	20	20	20	20	20

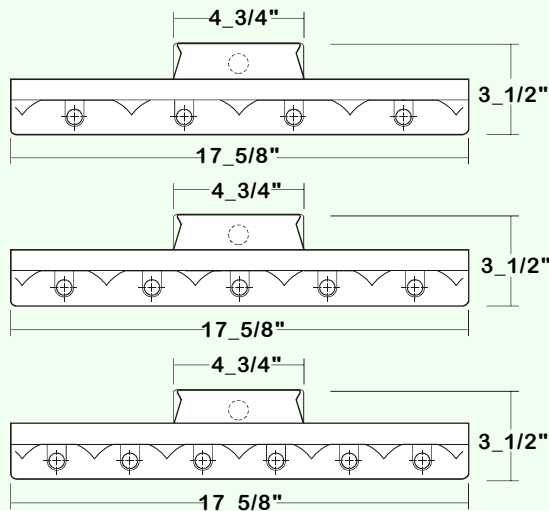


# THE E-BAY



## IBT200 SERIES

### CROSS SECTION



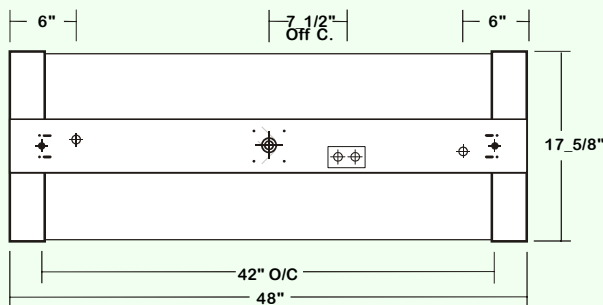
●ALUMINUM REFLECTOR SECURED WITH QUARTER TURN FASTENERS FOR EASE OF MAINTENANCE.

### CATALOG NUMBER

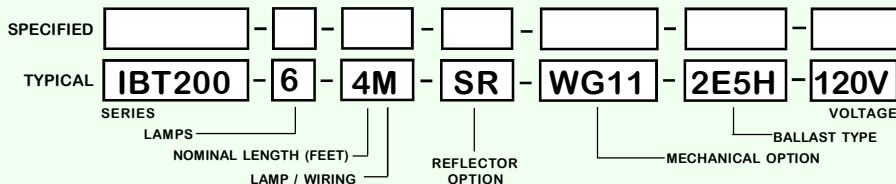
	NOMINAL LENGTH	TOTAL LAMPS	LAMP TYPE
IBT200-4-4M	4'	4	T5/T5HO
IBT200-5-4M	4'	5	T5/T5HO
IBT200-6-4M	4'	6	T5/T5HO
IBT200-4-4R	4'	4	T8
IBT200-5-4R	4'	5	T8
IBT200-6-4R	4'	6	T8

### BACKPLATE

- V-HOOK
- 3/16" K.O.
- ◆ 11/16" STEM MTG. K.O.
- ⊕ 7/8" OFFSET K.O.
- ⊕ 2" K.O.



### ORDERING GUIDE



NOTE: LAMP/WIRING\* M= Miniature Bi-Pin T5 R = Medium Bi-Pin T8

### OPTIONS and ACCESSORIES

BALLAST OPTIONS	PAGE REF-1	ELECTRICAL OPTIONS	PAGE REF-2	MECHANICAL OPTIONS	PAGE REF-4,5&6
Electronic Ballast T5 28W	E5	Emergency Battery Pack	*	Damp Location	DL
Electronic Ballast T5 HO 54W	E5H	External Line Fusing (HLR/GLR)	ELF	Wire Guard - 11 Ga.	WG11
Electronic Ballast T8	E8	Motion Sensor	MS	Fixture Suspending System	*
Electronic High BF T8 Ballast	E8IH			V-Hooks For Chain MTG.	V-4
Electronic T5 HO Dimming Ballast	E5HDM			Up-Light	U
Electronic Dimming Ballast	EDM	REFLECTOR OPTIONS <td>SUFFIX</td> <td>Die Cast Hub For 3/4" Pipe</td> <td>HUB</td>	SUFFIX	Die Cast Hub For 3/4" Pipe	HUB
Digital Addressable Ballast	DAB	Specular Aluminum Reflector, 95%	SR		
		White Aluminum Reflector, 90%	WR		

\*See Appropriate Reference Page

### SPECIFICATIONS

MADE IN THE U.S.A.

- **TYPE** High bay open light luminaire for stems, cable or chain mounting.
- **CONSTRUCTION** 22 gauge cold rolled steel housing. Quarter turn rotary locking lampholders standard. (20 ga. C.R.S. and .040 aluminum housing available as specified)
- **REFLECTOR** Specular aluminum reflector standard, 95% reflectance (White aluminum reflector available). Slotted up-light reflector optional.
- **WIRE GUARDS** 11 ga. Chrome epoxy powder coated.
- **FINISH** Baked white polyester finish, minimum reflectance 86%. (Powder coated finish available.)
- **WIRING** 120v 60Hz., 277v 60Hz., UNV (universal voltage 120v thru 277v.) or as otherwise specified. Multiple levels of switching available as specified.
- **LABELS** U.L. Listed.

