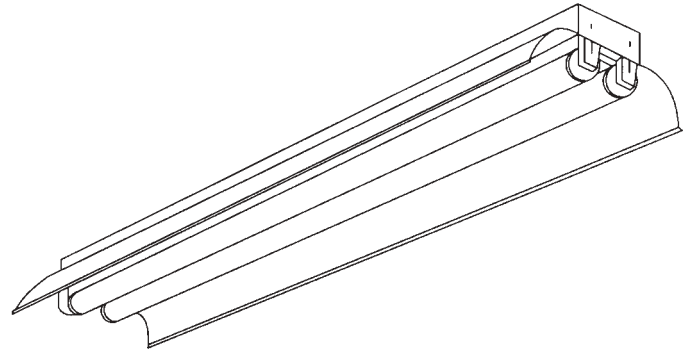
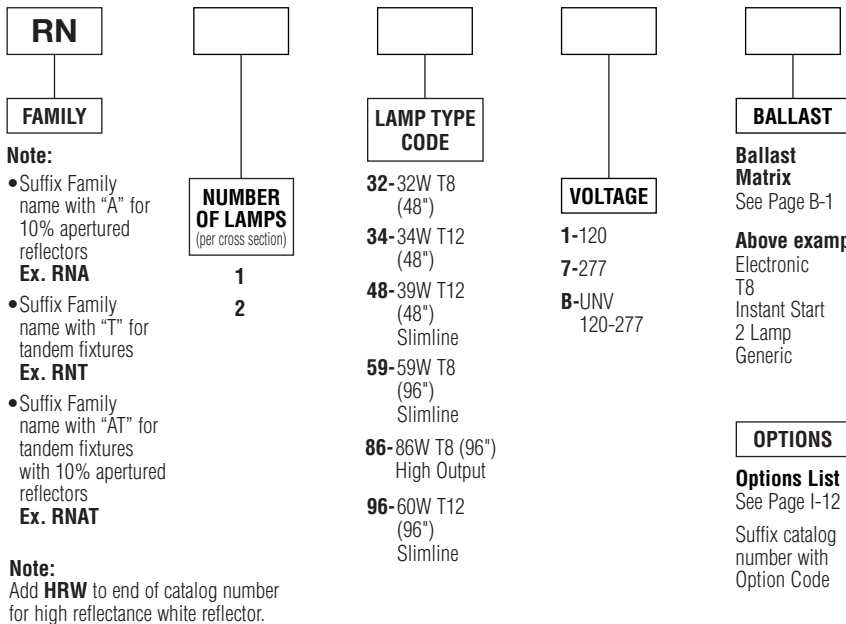


General Purpose Industrial (RN)



ORDERING INFORMATION

Catalog Number: Example: RN2321K2Y



- Note:**
- Suffix Family name with "A" for 10% apertured reflectors
Ex. RNA
 - Suffix Family name with "T" for tandem fixtures
Ex. RNT
 - Suffix Family name with "AT" for tandem fixtures with 10% apertured reflectors
Ex. RNAT

Note:
Add **HRW** to end of catalog number for high reflectance white reflector.

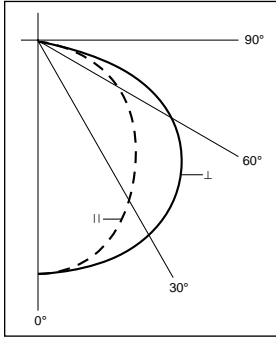
PRODUCT FEATURES

- Die-formed 4 ft. reflector with transverse ribbing for structural stability.
- Quick-release quarter-turn fasteners provide ease of installation and maintenance.
- Cord, plug and chain sets available for reduced installation cost.
- Combination end plate/coupler assures integrity of row alignment. (Heavy-duty 10" coupler available).
- UL Damp Location labels are standard with this series.

PRODUCT AVAILABILITY

FAMILY	NOMINAL SIZE	NUMBER OF LAMPS (per cross section)	NUMBER OF LAMPS (per fixture)	LAMP TYPE CODE	LENGTH	WIDTH	HEIGHT
RN	4'	2	2	32, 34	48"	10"	3 15/16"
		2	2	48			
RN	8'	1	1	59, 96	96"	10"	3 15/16"
		2	2	59, 96			
RNA	4'	2	2	32, 34	48"	10"	3 15/16"
		2	2	48			
RNA	8'	1	1	59, 96	96"	10"	3 15/16"
		2	2	59, 96			
RNT	8'	1	2	32, 34	96"	10"	3 15/16"
		2	4	32, 34			
RNT	16'	1	2	59, 96	192"	10"	3 15/16"
RNAT	8'	1	2	32, 34	96"	10"	3 15/16"
		2	4	32, 34			
RNAT	16'	1	2	59, 96	192"	10"	3 15/16"

Two-Lamp Photometric Data



Coefficients of Utilization

Floor Cavity Reflectance 0.20

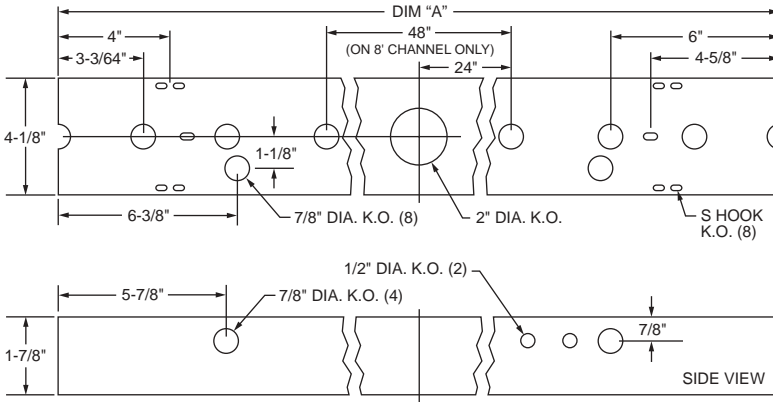
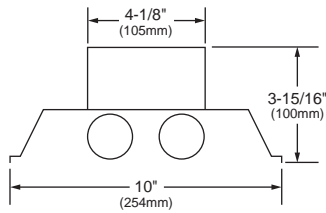
Room Cavity Ratio	RC RW	80%			50%			10%		
		50	30	10	50	30	10	50	30	10
1		91	88	84	86	83	81	78	76	75
2		80	74	69	75	70	66	68	65	62
3		70	63	57	66	60	56	60	56	53
4		62	54	48	58	51	46	54	49	45
5		54	45	39	50	44	39	48	43	39
6		47	39	34	45	38	33	42	37	33
7		42	34	29	40	34	29	38	32	28
8		38	30	25	36	29	25	34	28	24
9		34	26	21	33	26	21	31	25	21
10		31	23	19	30	23	18	28	23	19

SPECIFICATIONS

Housing is die-formed of cold-rolled steel for uniformity and rigidity. Four foot reflectors are formed with transverse ribbing for structural stability. Quick-release quarter-turn fasteners secure all reflectors. All metal components are phosphate coated and finished in baked white enamel providing a minimum reflectance factor of 85%. Units are equipped with high power factor Class "P" ETL-CBM ballasts. Standard voltage is 120 volt 60 Hz. Fixtures are UL-listed and bear union and UL labels.

DIMENSIONS

All KOs are 7/8" dia. unless otherwise specified.



DIM "A"	
4' FIXTURE	(1219mm) 48"
8' FIXTURE	(2438mm) 96"

NOTE: Do not flush mount HO units. HO units should be suspended minimum 1-1/2" from surface.

Dimensions and specifications subject to change without notice.