

THE E-BAY



EBY200 SERIES

- High Bay Luminaire
- 2, 3, or 4 Lamps
- Hingeable Lamp/Reflector Assembly
- Specular Aluminum Reflectors (Miro4®)
- Removable Wiring Accessed Plate
- Stem, Cable, and Chain Mountable
- .040 Aluminum Housing Available
- Quarter Turn Rotary Locking Sockets

PHOTOMETRIC DATA

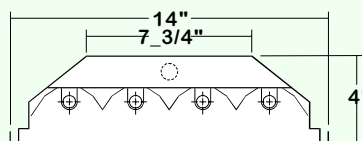
TEST ITEM=EBY200-4-4M-SR-E5H

TEST NO.=LA-T0795
 LAMP TYPE=F54T5HO
 NO. OF LAMP=4
 LUMENS PER LAMPS=5000
 WATTS PER LAMP=54
 BALLAST FACTOR=1
 PHOTOMETRY TYPE=C

SPACING CRITERION	
ALONG 1.33	ACROSS 1.31

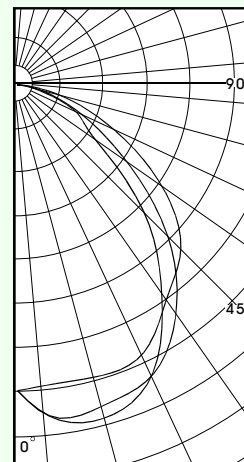
ZONAL LUMEN SUMMARY			
DEGREES	LUMENS	% LAMP	% FIXTURE
0-30	5981	29.9	32.1
0-40	9697	48.5	52.1
0-60	15952	79.8	85.7
0-90	18616	93.1	100
90-120	2	0	0
90-130	2	0	0
90-150	2	0	0
90-180	2	0	0
0-180	18618	93.1	100

CANDLEPOWER			
Angle	End	45	Cross
0	6804	6804	6804
5	6719	7366	7367
15	6724	7383	7655
25	6593	7115	7095
35	5786	6148	5578
45	5134	4705	3948
55	3916	2953	2101
65	2383	1603	1449
75	1118	678	544
85	212	128	108
90	6	7	12
95	0	0	0
105	0	0	0
115	0	0	0
125	0	0	0
135	0	0	0
145	0	0	0
155	0	0	0
165	0	0	0
175	0	0	0
180	0	0	0



Total Luminaire Optical Efficiency = 93.1%

COEFFICIENT OF UTILIZATION														
	20		70		50		30		10		0			
pfc	20													
pcc	80													
pw	70	50	30	70	50	30	50	30	50	30	50	30		
RCR	0	111	111	111	108	108	108	103	103	99	99	95	95	93
1	102	98	95	100	96	93	92	89	89	86	85	83	80	
2	94	87	81	91	85	80	82	77	79	75	76	73	68	
3	86	77	70	84	75	69	73	67	70	65	68	64	58	
4	79	68	61	77	67	60	64	59	63	57	61	56	51	
5	73	62	54	71	60	53	59	52	57	51	55	50	44	
6	67	56	48	66	55	47	53	46	52	46	50	45	39	
7	63	51	43	61	50	42	48	42	47	41	46	40	35	
8	58	46	39	57	46	38	44	38	43	37	42	37	31	
9	55	42	35	53	42	35	41	34	40	34	39	33	28	
10	51	39	32	50	39	32	38	31	37	31	36	31	25	



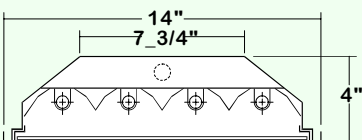
TEST ITEM=EBY200-4-4M-SR-FSW-PA-E5H

TEST NO.=LA-T0797
 LAMP TYPE=F54T5HO
 NO. OF LAMP=4
 LUMENS PER LAMPS=5000
 WATTS PER LAMP=54
 BALLAST FACTOR=1
 PHOTOMETRY TYPE=C

SPACING CRITERION	
ALONG 1.07	ACROSS 1.01

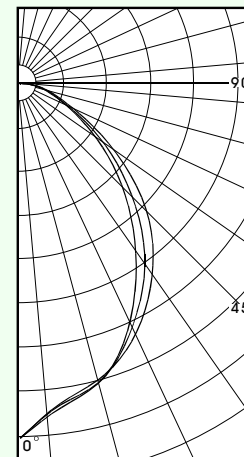
ZONAL LUMEN SUMMARY			
DEGREES	LUMENS	% LAMP	% FIXTURE
0-30	5223	26.1	35.6
0-40	8148	40.7	55.6
0-60	12733	63.7	86.9
0-90	14655	73.3	100
90-120	4	0	0
90-130	4	0	0
90-150	4	0	0
90-180	4	0	0
0-180	14659	73.3	100

CANDLEPOWER			
Angle	End	45	Cross
0	7635	7635	7635
5	7099	7173	7112
15	6583	6644	6635
25	5911	5737	5606
35	4956	4674	4317
45	3824	3385	3081
55	2413	2143	1939
65	1238	1114	1061
75	642	589	557
85	217	195	181
90	18	15	15
95	0	0	0
105	0	0	0
115	0	0	0
125	0	0	0
135	0	0	0
145	0	0	0
155	0	0	0
165	0	0	0
175	0	0	0
180	0	0	0



Total Luminaire Optical Efficiency = 73.3%

COEFFICIENT OF UTILIZATION														
	20		70		50		30		10		0			
pfc	20													
pcc	80													
pw	70	50	30	70	50	30	50	30	50	30	50	30		
RCR	0	87	87	87	85	85	85	81	81	78	78	75	75	73
1	80	77	75	78	73	73	73	70	70	68	67	66	63	
2	74	69	64	72	67	63	65	61	62	59	60	58	54	
3	68	61	56	66	60	55	58	54	56	52	54	51	47	
4	63	55	49	61	54	48	52	47	50	46	49	45	41	
5	58	49	43	57	49	43	47	42	46	41	44	41	36	
6	54	45	39	54	44	39	43	38	42	37	41	37	32	
7	50	41	35	49	40	35	39	34	38	34	37	33	29	
8	47	38	32	46	37	32	36	31	35	31	34	30	26	
9	44	35	29	43	34	29	33	28	33	28	32	28	23	
10	41	32	27	40	32	27	31	26	30	26	30	26	21	

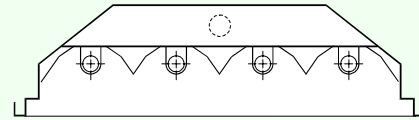
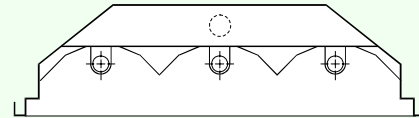
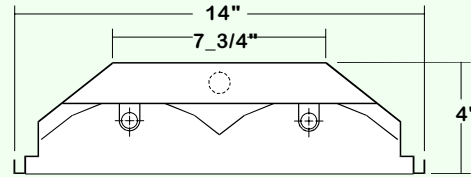


THE E-BAY



EBY200 SERIES

CROSS SECTION

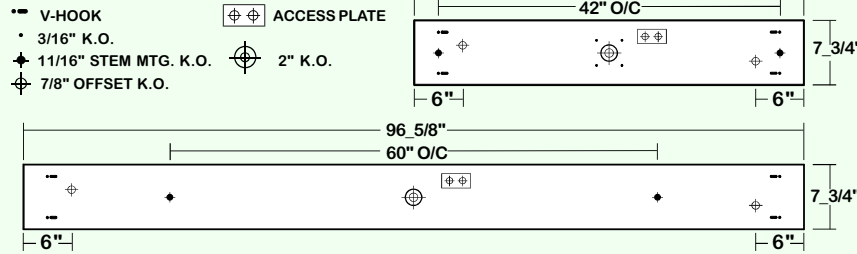


● 1 PIECE SWING-OPEN LAMP/REFLECTOR PANEL FOR EASE OF MAINTENANCE.

CATALOG NUMBER

	NOMINAL LENGTH	TOTAL LAMPS		NOMINAL LENGTH	TOTAL LAMPS
EBY200-2-4M	4'	2	EBY200-2-8MT	8'	4
EBY200-3-4M	4'	3	EBY200-3-8MT	8'	6
EBY200-4-4M	4'	4	EBY200-4-8MT	8'	8
EBY200-2-4R	4'	2	EBY200-2-8RT	8'	4
EBY200-3-4R	4'	3	EBY200-3-8RT	8'	6
EBY200-4-4R	4'	4	EBY200-4-8RT	8'	8

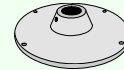
BACKPLATE



- V-HOOK
- 3/16" K.O.
- ⊕ 11/16" STEM MTG. K.O.
- ⊕ 7/8" OFFSET K.O.
- ⊕ ACCESS PLATE
- ⊕ 2" K.O.

HUB FOR 3/4" PIPE

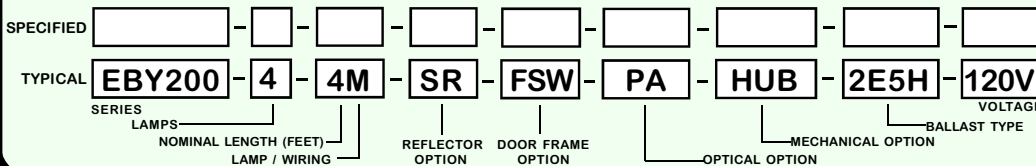
Aluminum die cast hub for 3/4" pipe with safety cable set. Each set consists of:



- One Hub .
- 8' cable, one end free and the other end secured within fixture.
- Self-locking device secures the free end to ceiling member.

*Please see Page REF-5 for mounting detail.

ORDERING GUIDE



NOTE: LAMP/WIRING*

- M**= Miniature Bi-Pin T5
- MT**= Miniature Bi-Pin T5 Tandem Wiring
- R**= Medium Bi-Pin T8
- RT**= Medium Bi-Pin T8 Tandem Wiring

OPTIONS and ACCESSORIES

<p>● BALLAST OPTIONS PAGE REF-1</p> <ul style="list-style-type: none"> Electronic Ballast T8 * Electronic Ballast T5 E5 Electronic Ballast T5 HO E5H Electronic T5HO Dimming Ballast E5HDM Digital Addressable Ballast DAB <p>● OPTICAL OPTIONS PAGE REF-3</p> <ul style="list-style-type: none"> Clear Acrylic CA Clear Prismatic Acrylic PA Flat White Acrylic FWA Other Lens Available Upon Request * 	<p>● MECHANICAL OPTIONS PAGE REF-4,5&6</p> <ul style="list-style-type: none"> Damp Location DL Wire Guard - 11 Ga. WG11 Fixture Suspending System * Ceiling Spacer * V-Hooks For Chain MTG. V-6 Die Cast Hub For 3/4" Pipe HUB <p>● DOOR FRAME OPTIONS SUFFIX</p> <ul style="list-style-type: none"> Flat Steel Door Frame/ White Finish FSW Flat Steel Door Frame/ Black Finish FSB 	<p>● ELECTRICAL OPTIONS PAGE REF-2</p> <ul style="list-style-type: none"> Emergency Battery Pack * External Line Fusing (HLR/GLR) ELF Radio Interference Filters RIF Motion Sensor MS <p>● REFLECTOR OPTIONS SUFFIX</p> <ul style="list-style-type: none"> Specular Aluminum Reflector, 95% SR White Aluminum Reflector WR
---	--	--

*See Appropriate Reference Page

SPECIFICATIONS

- **TYPE** High bay luminaire for surface, pendant, or chain mounting. Must be spaced a minimum of 1 1/2" from ceiling when surface mounted. Lensed door frame or wire guard optional.
- **CONSTRUCTION** 22 gauge cold rolled steel housing. Quarter turn rotary locking lampholders standard. 20 GA. housing and 0.040 aluminum housing available as specified.
- **REFLECTOR** Specular Aluminum reflector standard, 95% reflectance. (White aluminum reflector available.)
- **DOOR FRAME/OPTICS** 20 ga. cold rolled steel door frame secured by four spring loaded barrel latches. Nom .125 clear prismatic acrylic lens standard. Extensive variety of lenses, diffusers and louvers available.
- **WIRE GUARDS** 11ga. Chrome epoxy powder coated.
- **FINISH** Baked white polyester finish, minimum reflectance 86%. (Powder coated finish, painted after fabrication available as specified.)
- **WIRING** 120v 60Hz., 277v 60Hz., UNV (universal voltage 120v thru 277v.) or as otherwise specified. Multiple levels of switching available as specified. Inside/outside wiring standard.
- **LABELS** U.L. Listed.

MADE IN THE U.S.A.

